

**Overview**

- Extra flat, front-mountable housing
- Lowest serial dispersion due to end-of-line calibration
- Robust even in demanding environments
- Temperature and long-term stable switching behavior



Picture similar



**Technical data**

**General data**

|                             |  |
|-----------------------------|--|
| Mounting type               | Flush  |
| Nominal sensing distance Sn | 2 mm   |
| Assured sensing distance Sa | ≤ 81 % of Sn   |
| Real sensing distance Sr    | ± 10 % von Sn  |
| Temperature drift           | ± 10 % of Sr   |
| Hysteresis                  | 2 ... 20 % of Sr   |
| Output indicator            | LED red  |
| Correction factor typ.      | Mild steel 100 %, stainless steel 75 %, aluminum 50 %, copper 45 % |
| Reference object            | Fe360 8 x 8 x 1 mm   |

**Electrical data**

|                                    |                        |
|------------------------------------|------------------------|
| Switching frequency                | 5 kHz                  |
| Voltage supply range +Vs           | 6 ... 30 VDC           |
| Current consumption max. (no load) | 12 mA                  |
| Output circuit                     | NPN make function (NO) |
| Voltage drop Vd                    | <2 VDC                 |
| Output current                     | 100 mA                 |
| Short circuit protection           | Yes                    |
| Reverse polarity protection        | Yes                    |

**Mechanical data**

|                         |             |
|-------------------------|-------------|
| Design                  | Rectangular |
| Material (sensing face) | PBT         |

**Mechanical data**

|                        |                             |
|------------------------|-----------------------------|
| Housing material       | Die-cast zinc nickel plated |
| Dimension              | 8 mm                        |
| Housing length         | 16 mm                       |
| Connection types       | Cable, L=2 m                |
| Tightening torque max. | 0.8 Nm                      |
| Weight                 | 8 g                         |

**Ambient conditions**

|                       |  |
|-----------------------|--|
| Operating temperature | -25 ... +75 °C   |
| Storage temperature   | -25 ... +75 °C   |
| Protection class      | IP 67  |
| Vibration resistance  | IEC 60068-2-6:2008 10 g at f = 10 - 2000 Hz, duration 150 min per axis |
| Shock resistance      | IEC 60068-2-27:2009 100 g / 6 ms, 10 jolts per axis and direction      |

**Safe maximum values**

|                          |            |
|--------------------------|------------|
| MTTF                     | 4040 years |
| Diagnostic coverage (DC) | 0 %        |

**Cable**

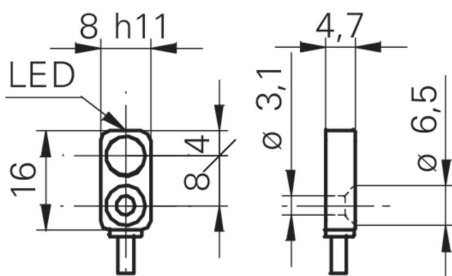
|                           |                      |
|---------------------------|----------------------|
| Cable length              | 200 cm               |
| Shielded                  | No                   |
| External sheath: Material | PVC                  |
| Cable diameter            | 2.4 mm               |
| Wire cross section        | 0.08 mm <sup>2</sup> |
| Insulation: Material      | PP                   |
| Bending radius (fixed)    | 3 × outer diameter   |

**Technical data**

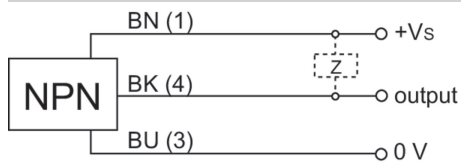
**Cable**

Bending radius (mobile) 10 × outer diameter

**Dimension drawing**



**Connection diagram**



**Response diagram**

